



Preparing Career Ready Graduates

Joint Health Management Board

MES Benefit Information



FRESNO USD / EFFECTIVE 1/1/2013

Follow these simple steps:

- Select a provider.** Select a participating vision care provider by visiting www.MESVision.com. Obtaining services from a Participating Provider will maximize your benefits.
- Make an appointment.** Call the Participating Provider of your choice to make an appointment and inform them of your vision coverage.
- You're done! Your doctor will take care of the rest.** The Participating Provider will contact MESVision to verify your eligible benefits and submit a claim for payment for services covered by your plan.
- If covered services are received from a non-participating provider, you are responsible for paying the provider in full. You or the provider must submit the itemized bill and a copy of your prescription with the Claim Form to MESVision. Reimbursement will be made to the insured person up to the schedule of allowances shown for non-participating providers.

LIMITATIONS

Contact Lenses and fitting except as specifically provided; Eyewear when there is no prescription change, except when benefits are otherwise available; Non-standard lenses, including, but not limited to; Progressive, Photochromic, hi-index, Polycarbonate, occupational lenses, beveled, faceted, coated or oversize; Tints other than pink or rose #1 or #2, except as specifically provided; Two pair of glasses in lieu of bifocals, unless prescribed; New-patient intermediate examinations: .When an Enrollee selects a different provider to perform the intermediate examination , the Enrollee will be responsible for the difference between the intermediate examination allowance and the comprehensive examination allowance. To maximize benefits, the patient should return to the original provider; Non-prescription (Plano) eyewear, except when specifically covered.

EXCLUSIONS

Any eye examination required by the employer as a condition of employment; Any covered services provided by another vision plan; Conditions covered by Workers' Compensation; Contact lens insurance of care kits; Frame cases; Covered Services which began prior to the Enrollee's effective date or after benefits have been terminated; Charges for which the Enrollee is not legally obligated to pay; Covered Services required by any government agency or program federal, state or subdivision thereof; Covered Services performed by a Close Relative or by an individual who ordinarily resides in the Enrollee's home; Covered Services obtained from a Non-Participating Provider; Medical or Surgical treatment of the eyes; Orthoptics, vision training or Subnormal or Low Vision Aids; Services that are Experimental or Investigational in nature; Services for treatment directly related to any totally disabling condition, illness or injury; Lenses or frames which are lost, stolen or broken will not be replaced, except when benefits are otherwise available; In connection with war or any act of war whether declared or undeclared; a condition or accident occurring while on full-time active duty in the armed forces or any country or combination of countries.

This is a brief outline of the plan and is not to be accepted or construed as a substitute for the provisions of the contract.

Benefits:

- Co-pay: Exam \$5.00
- Comprehensive Vision Exam: One every 12 months
- Lenses* (Standard) One pair every 12 months
- Frame:** One frame every 24 months
- Contact Lenses:*** One pair every 12 months

The Policy provides full coverage for Covered Services when you go to a Participating Provider of the MESVision network. If Covered Services are provided by a Non-Participating Provider, charges will be paid, but not to exceed the following Schedule of Allowances.

**"Standard" lenses (plastic) fit any frame with an eye size less than 61mm.

	Participating Provider	Non-Participating Provider
Comprehensive Examination	Covered	Up to \$ 45.00
Single Vision Lenses*	Covered	Up to \$ 30.00
Bifocal Lenses*	Covered	Up to \$ 50.00
Trifocal Lenses*	Covered	Up to \$ 65.00
Progressive Lenses	Up to \$ 89.50	Up to \$ 65.00
Polycarbonate Lenses****	Up to \$ 85.00	Up to \$ 55.00
Aphakic Monofocal	Covered	Up to \$ 125.00
Aphakic Multifocal	Covered	Up to \$ 125.00
Frame**	Up to \$130.00	Up to \$ 75.00
Contact Lenses ***	Covered	
Medically Necessary	Approval required	Up to \$ 250.00
Cosmetic or Convenience	Up to \$130.00	Up to \$ 130.00

** Participating Providers allow a selection of frames that retail up to **\$130.00** with lenses that fit an eyesize less than 61 millimeters. If a more expensive frame is selected, you are responsible for the additional cost above **\$130.00**. If the lenses received are 61 millimeters or above, the charge for the oversize lenses is your responsibility. "The retail frame allowance will be converted to wholesale or warehouse equivalent prices at category 5 or 6 provider locations (please refer to the Plan's website at www.MESVision.com). The wholesale or warehouse equivalent may be approximately 30% less than the retail frame allowance; please confirm this benefit before ordering your eyewear."

*** This benefit is in addition to the comprehensive vision examination, but in lieu of lenses and frame. If contact lenses are for cosmetic or convenience purposes, the Policy will pay up to **\$130.00** toward the contact lens evaluation, fitting costs and materials. Any balance is your responsibility. If contact lenses are medically necessary, they are a fully covered benefit. Approval from MESVision is required. Please refer to your Policy if you require additional information.

****For Dependent Children through age 18

Discounts: A 20% discount is available for cosmetic extras, such as tints, coatings and other add-on charges to standard lenses, after Covered Services are rendered. The discount may be applied to charges for the frame or contact lenses (except disposable or replacement contact lenses) over the stated allowances. The 20% discount also applies to additional pairs of glasses and/or pairs of standard contact lenses. To determine whether a provider offers the 20% discount, an insured individual can review their Participating Provider Directory, call MESVision or visit www.MESVision.com. Discounts are available through TLCVision for conventional and custom LASIK procedures with the TLCVision Advantage Program.

If you have any questions about your vision benefits, please contact Medical Eye Services at:
 PO Box 25209; Santa Ana, CA 92799
 800/877-6372 or www.MESVision.com

Underwritten By:



Gerber Life Insurance Company
 A separate subsidiary of Gerber Products
 Home Office: White Plains, NY 10605

FRESNO UNIFIED SCHOOL DISTRICT VISION PLAN COMPARISON

BENEFITS In-Network	NEW MESVision Plan Effective 1/1/13	VISION SERVICE PLAN (VSP) No longer Available	SAFEGUARD No longer Available
Examinations	Once each 12 months	Once each 12 months	Once each 12 months
Spectacle Lenses	One pair each 12 months	One pair each 12 months	One pair each 12 months
Frames	Once each 24 months	Once each 24 months	Once each 24 months
Medically Necessary Contacts (in lieu of other benefits)	One pair each 12 months	One pair each 12 months	One pair each 24 months
Elective Contacts (in lieu of other benefits)	One pair each 12 months	One pair each 12 months	One pair each 24 months
Copayment	\$5.00	\$5.00	\$5.00
Frame Allowance	Up to \$130 retail, plus 20% off any out-of-pocket at MES Discount Participating Provider	Up to \$115, plus 20% of any out-of-pocket over \$115	\$35 Maximum Wholesale Allowance plus difference between the allowance and the wholesale cost of the more expensive frame, plus an additional service fee.
Non-Medically Necessary Contact Lens Allowance	\$130 toward the contact lens evaluation, fitting costs and materials	\$105 toward the contact lens evaluation, fitting costs and materials.	Up to \$50 exam and \$100 materials.
Medically Necessary Contact Lens Allowance	Covered in full	Covered in full	\$250 Maximum Allowance

This is your ID card

Cut out the card below and keep it with you.

The card is not required to receive services, but it can provide you with helpful information about your coverage.

Brilliant Vision Care since 1976

Administered by: MESVision

² In lieu of other eyewear, except when specifically provided.

¹ Retail frame benefits will be converted to wholesale equivalent prices, at certain provider locations.

For more information, please visit www.cendiscount.com.

A 20% discount is available through selected Participating Providers.

or visit www.MESVision.com

the MESVision Call Center at (800) 877-6372 (8:00am - 5:00pm PST)

If you have any questions regarding your vision coverage, please contact

We Are Here To Help:

1. Select a provider by visiting www.MESVision.com

2. Make an appointment and inform the Participating Provider of your coverage.

3. You're done. Your doctor will take care of the rest.

Obtaining Services is Easy:

fold here

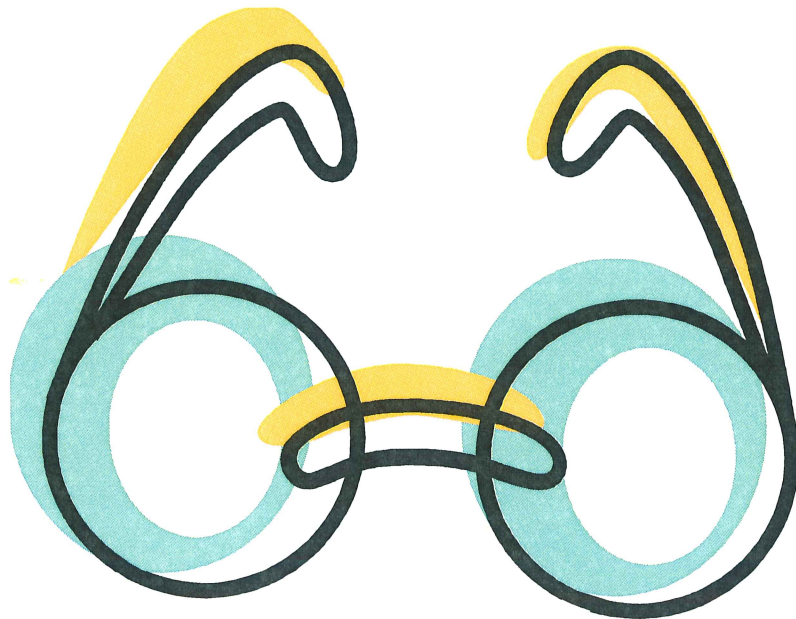
MES Vision Brilliant Vision Care since 1976

Subscriber Name: Joe Smith
Group Name: Fresno Unified School District
Policy #: XXXX-X-XXX
Coverage Type: Employee
Frame Allowance¹: Up to \$130.00 Retail
Contact Lens Allowance²: Up to \$130.00 Retail
Copayment: 5.00
Exam Frequency: 12 months
Lens Frequency: 12 months
Frame Frequency: 24 months
Contact Frequency: 12 months (in lieu of lens and frame)

You do not need to present this card to obtain services. This card is for information only and is not a guarantee of coverage.

Medical Eye Services does not issue ID cards. They have enhanced their website to allow members to print an identification card on-line. These cards include employee's name, enrollment status such as employee or family coverage, frequency limitations, frame and contract allowances, a customer service number and web address.

Those enrolled in the group's vision plan may continue to render service without an ID card by providing the employee's social security number to providers for verification of coverage. Cards will not be sent to members; however, if one is desired, can be accessed by logging onto the MES website at www.mesvision.com. At the member sign in screen the last four digits of social security number, zip code, first and last name are all that are required to log in. For your convenience, a copy of what you may print is detailed on the reverse side of this notice.





Fresno - Kings - Madera - Tulare

PARTICIPATING PROVIDER DIRECTORY

By County

PROVIDER NAME	PROV TYPE	STREET ADDRESS	CITY	ZIPCODE	TEL NO
FRESNO					
MULVEY RAYMOND OD	OD	33033 AUBERRY RD	AUBERRY	93602-9603	(559) 855-2500
FOGG STEVEN G MD	MD	1817 SHAW AVE STE 104	CLOVIS	93611-4069	(559) 449-5010
MAXWELL WILLIAM A MD	MD	1817 SHAW AVE STE 104	CLOVIS	93611-4069	(559) 449-5010
REMINGTON RODNEY C MD	MD	1817 SHAW AVE STE 104	CLOVIS	93611-4069	(559) 449-5010
DAIJO GRACE OD	OD	600 SHOWERS DRIVE	CLOVIS	93612	(650) 917-0387
DILL GERALD L OD	OD	1817 SHAW AVE STE 104	CLOVIS	93611-4069	(559) 449-5010
EVANS DIANNE OD	OD	380 WEST ASHLAN AVENUE	CLOVIS	93612-5611	(559) 348-1105
HARMON MICHAEL G OD	OD	1817 SHAW AVE STE 104	CLOVIS	93611-4069	(559) 449-5010
HULTMAN SCOTT R OD	OD	1140 SHAW AVE	CLOVIS	93612-3944	(559) 298-4596
MENCARINI SUSAN D OD	OD	145 N CLOVIS AVE STE 101	CLOVIS	93612-0361	(559) 298-2120
MENDOZA MICHAEL OD	OD	323 WEST SHAW AVENUE	CLOVIS	93612-3604	(559) 687-8721
NEWSOME JAY OD	OD	145 N CLOVIS AVE STE 101	CLOVIS	93612-0361	(559) 298-2120
NISHIO WAYNE A OD	OD	145 N CLOVIS AVE STE 101	CLOVIS	93612-0361	(559) 299-3179
SHUTE STEVEN W OD	OD	305 POLLASKY AVE	CLOVIS	93612-1139	(559) 299-4257
SIVAS HAROLD C OD	OD	280 SHAW AVE STE B	CLOVIS	93612-3800	(559) 299-7266
SIVAS HAROLD C OD	OD	323 W SHAW AVE	CLOVIS	93612-3604	(559) 325-1986
SORTOR JOHN P OD	OD	684 MED CENTER DR E STE 104	CLOVIS	93611-6806	(559) 299-7840
ZHOU HELEN OD	OD	323 W SHAW AVE	CLOVIS	93612-3604	(559) 325-1986
ZHOU HELEN OD	OD	1817 SHAW AVE STE 104	CLOVIS	93611-4069	(559) 449-5010
COSTCO OPTICAL	OPT	380 W ASHLAN BLVD	CLOVIS	93612-5611	(559) 291-2542
SEARS OPTICAL	OPT	1140 SHAW AVE	CLOVIS	93612-3944	(559) 298-4596
THE VISION CENTER IN WAL*MART	OPT	323 W SHAW AVE	CLOVIS	93612-3604	(559) 325-1898
UNIQUE OPTIQUE	OPT	426 W SHAW AVE	CLOVIS	93612-3207	(559) 298-8262
WHITE JEFFREY W OD	OD	352 COALINGA PLZ	COALINGA	93210-1704	(559) 935-9133
FARRIS STEPHEN J OD	OD	121 E. MERCED STREET STE.A	FOWLER	93625-2358	(559) 316-7053
AMIRAHMADI MODJTABA MD	MD	1360 E HERNDON AVE #301	FRESNO	93720-3326	(559) 486-5000
AMIRAHMADI MODJTABA MD	MD	1122 S STREET	FRESNO	93721-1430	(559) 486-5000
BERTOLUCCI GEORGE A MD	MD	1122 S ST	FRESNO	93721-1430	(559) 486-5000
BERTOLUCCI GEORGE A MD	MD	1360 E HERNDON AVE STE 301	FRESNO	93720-3326	(559) 486-5000
BIDAR MIZIAR MD	MD	1360 E HERNDON AVE STE 301	FRESNO	93720-3326	(559) 486-5000
BIDAR MIZIAR MD	MD	1122 S ST	FRESNO	93721-1430	(559) 486-5000
CLARK JACK D MD	MD	30 RIVER PARK PLACE W STE 120	FRESNO	93720-1546	(559) 439-1620
FAGOORA PARAMJIT S MD	MD	347 E BARSTOW SUITE #104	FRESNO	93710-6039	(559) 439-2040
FOGG STEVEN G MD	MD	3830 N 1ST ST	FRESNO	93726-4301	(559) 449-5010
FOGG STEVEN G MD	MD	1360 E HERNDON AVE STE 401	FRESNO	93720-3326	(559) 449-5010

PROVIDER NAME	PROV TYPE	STREET ADDRESS	CITY	ZIPCODE	TEL NO
HINTON SAMUEL P MD	MD	7075 N SHARON AVE	FRESNO	93720-3329	(559) 486-2000
KAYE DAVID B MD	MD	6767 N FRESNO ST	FRESNO	93710-3739	(559) 432-1000
KUMMERFELD KEVIN R MD	MD	1360 E HERNDON AVE STE 301	FRESNO	93720-3326	(559) 486-5000
KUMMERFELD KEVIN R MD	MD	1122 S ST STE 101	FRESNO	93721-1430	(559) 486-5000
LANIER ANDREA B MD	MD	1360 E HERNDON AVE STE 401	FRESNO	93720-3326	(559) 449-5010
LANIER ANDREA B MD	MD	3830 N 1ST ST	FRESNO	93726-4301	(559) 449-5010
MAXWELL WILLIAM A MD	MD	3030 N 1ST ST	FRESNO	93726-1244	(559) 449-5010
MAXWELL WILLIAM A MD	MD	1360 E HERNDON AVE STE 401	FRESNO	93720-3326	(559) 449-5010
MENDOZA RICHARD N MD	MD	1122 S ST	FRESNO	93721-1430	(559) 486-5000
MENDOZA RICHARD N MD	MD	1360 E HERNDON AVE STE 301	FRESNO	93720-3326	(559) 449-5060
MOORS RICHARD L MD	MD	7075 N SHARON AVE	FRESNO	93720-3329	(559) 486-2000
NERENBERG ALAN V MD	MD	7075 N SHARON AVE	FRESNO	93720-3329	(559) 486-2000
NGUYEN LOAN K MD	MD	6767 N FRESNO ST	FRESNO	93710-3739	(559) 432-1000
POULSEN ERIC J MD	MD	1360 E HERNDON AVE STE 201	FRESNO	93720-3326	(559) 449-5050
REMINGTON RODNEY C MD	MD	1360 E HERNDON AVE STE 401	FRESNO	93720-3326	(559) 449-5010
REMINGTON RODNEY C MD	MD	3830 N 1ST ST	FRESNO	93726-4301	(559) 449-5010
ROY DONALD E MD	MD	1122 S ST	FRESNO	93721-1430	(559) 486-5000
ROY DONALD E MD	MD	1360 E HERNDON AVE STE 301	FRESNO	93720-3326	(559) 449-5060
SAKAUYE CAROLYN M MD	MD	1122 S ST	FRESNO	93721-1430	(559) 486-5000
SAKAUYE CAROLYN M MD	MD	1360 E HERNDON AVE STE 301	FRESNO	93720-3326	(559) 449-5060
SALAHUDDIN AZHAR I MD	MD	1360 E HERNDON AVE STE 201	FRESNO	93720-3326	(559) 449-5050
SALAHUDDIN AZHAR I MD	MD	7025 N CHESTNUT AVE STE 163	FRESNO	93720-0351	(559) 449-5050
STRUM DONALD H MD	MD	1122 S ST	FRESNO	93721-1430	(559) 486-5000
STRUM DONALD H MD	MD	1360 E HERNDON AVE STE 301	FRESNO	93720-3326	(559) 486-5000
WALKER BAIRN M MD	MD	7075 N SHARON	FRESNO	95120-3329	(559) 486-2000
WATERS GARY M MD	MD	1122 S ST	FRESNO	93721-1430	(559) 486-5000
WATERS GARY M MD	MD	1360 E HERNDON AVE STE 301	FRESNO	93720-3326	(559) 486-5000
WHITTEN RICHARD H MD	MD	1122 S ST	FRESNO	93721-1430	(559) 486-5000
WHITTEN RICHARD H MD	MD	1360 E HERNDON AVE STE 301	FRESNO	93720-3326	(559) 486-5000
WOOD MARK G MD	MD	7075 N. SHARON	FRESNO	93720-3329	(559) 486-2000
ARTEAGA JOHN W OD	OD	4041 N FRESNO ST STE 102	FRESNO	93726-4038	(559) 227-7512
BARRON JOHN G OD	OD	6767 N. FRESNO ST	FRESNO	93710-3739	(559) 432-1000
BAUDONNET ANTHONY OD	OD	7075 N SHARON AVE	FRESNO	93720-3329	(559) 486-2000
BLACKBURN JOHN D OD	OD	7409 NORTH CEDAR AVENUE	FRESNO	93720-3836	(559) 439-3937
BORBA KARISA M OD	OD	7075 N SHARON	FRESNO	93720-3329	(559) 486-2000
BOWLIN HEATHER W OD	OD	6331 N FRESNO ST STE 102	FRESNO	93710-5283	(559) 435-8900
BRUBAKER NADINE OD	OD	1360 E HERNDON #301	FRESNO	93720-3326	(559) 486-5000
BRUBAKER NADINE OD	OD	1122 S STREET	FRESNO	93721-1430	(559) 486-5000
CARLSON RAYMOND E OD	OD	3750 N BLACKSTONE AVE	FRESNO	93726-5306	(559) 227-2529
CARLSON RAYMOND E OD	OD	1030 FULTON MALL	FRESNO	93721-2502	(559) 222-3311
CASAGRANDE THOMAS R OD	OD	5110 N BLACKSTONE AVE STE 108	FRESNO	93710-6708	(559) 221-8900
CHARTERS DOUGLAS O OD	OD	5770 N 1ST ST	FRESNO	93710-6204	(559) 432-1700
CHINN DENNIS OD	OD	5151 N PALM AVE STE 530	FRESNO	93704-2208	(559) 224-8302
CHRISTENSEN BRIAN T OD	OD	1360 E HERNDON AVE STE 401	FRESNO	93720-3326	(559) 449-5010
CHRISTENSEN BRIAN T OD	OD	3830 N 1ST ST	FRESNO	93726-4301	(559) 226-3971
COLE KRISTINE OD	OD	5151 N PALM AVE STE 150	FRESNO	93704-2221	(559) 229-7202
COLE TERRY OD	OD	5151 N PALM AVE STE 150	FRESNO	93704-2221	(559) 229-7202
DILL GERALD L OD	OD	1360 E HERNDON AVE STE 401	FRESNO	93720-3326	(559) 449-5010

PROVIDER NAME	PROV TYPE	STREET ADDRESS	CITY	ZIPCODE	TEL NO
DILL GERALD L OD	OD	3830 N 1ST ST	FRESNO	93726-4301	(559) 449-5010
EVANS DIANNE OD	OD	4500 WEST SHAW AVENUE	FRESNO	93722-6200	(559) 271-9090
EYEXAM2000	OD	4983 N BLACKSTONE AVE	FRESNO	93726-0109	(559) 229-4973
FONG ANNA OD	OD	6700 N 1ST ST STE 102	FRESNO	93710-3947	(559) 438-0600
GAEDE PAUL OD	OD	1360 HERNDON #301	FRESNO	93720-3326	(559) 486-5000
GAEDE PAUL OD	OD	1122 S STREET	FRESNO	93721-1430	(559) 486-5000
GARDNER JOSHUA A OD	OD	5786 S ELM AVE	FRESNO	93706-5813	(559) 486-0731
GARDNER JOSHUA A OD	OD	1360 E HERNDON AVE STE 301	FRESNO	93720-3326	(559) 486-5000
GARDNER JOSHUA A OD	OD	1122 S ST	FRESNO	93721-1430	(559) 486-5000
HABIB JILL C OD	OD	1360 E HERNDON AVE STE 401	FRESNO	93720-3326	(559) 449-5010
HAMAMOTO STACI M OD	OD	1111 E HERNDON AVE STE 101	FRESNO	93720-3100	(559) 432-2200
HANDLY RALPH M OD	OD	7075 N SHARON AVE	FRESNO	93720-3329	(559) 486-2000
HARMON MICHAEL G OD	OD	1360 E HERNDON AVE STE 401	FRESNO	93720-3326	(559) 449-5010
HAYASHI MICHAEL K OD	OD	1111 E HERNDON AVE STE 101	FRESNO	93720-3100	(559) 432-2200
HAYASHI ROGER OD	OD	7409 N CEDAR AVE #103	FRESNO	93720-3836	(559) 439-3937
HIYAMA SHARON S OD	OD	1360 E HERNDON AVE STE 201	FRESNO	93720-3326	(559) 449-5050
HUYNH ANH-THU T OD	OD	3680 WEST SHAW	FRESNO	93711-3231	(559) 277-1785
HUYNH THU T OD	OD	7100 N ABBY ST	FRESNO	93720-2920	(559) 432-7171
IDETA RICK W OD	OD	7215 N FIRST STREET STE 101	FRESNO	93720-2985	(559) 226-3937
JENSEN ALESHA J OD	OD	5151 N PALM SUITE 150	FRESNO	93704-2204	(559) 229-7202
KAZARIAN NICK C OD	OD	5786 S ELM AVE	FRESNO	93706-5813	(559) 486-0731
KINNEY JOHN J OD	OD	1360 HERNDON AVE #301	FRESNO	93720-3326	(559) 486-5000
KINNEY JOHN J OD	OD	1122 S STREET	FRESNO	93704-1430	(559) 486-5000
KROHN JEFFREY C OD	OD	5151 N PALM AVE STE 150	FRESNO	93704-2221	(559) 229-7202
LOPEZ DANIEL OD	OD	7075 N SHARON AVE	FRESNO	93720-3329	(559) 486-2000
MANN SURBJEET OD	OD	7065 N. INGRAM AVE	FRESNO	93650-1083	(559) 435-5957
MENCARINI SUSAN D OD	OD	1360 E HERNDON SUITE 301	FRESNO	93720-3326	(559) 486-5000
MENDELSON SAUL M OD	OD	5478 N PALM AVE	FRESNO	93704-1940	(559) 447-4990
MUKAI GARY T OD	OD	7215 N FIRST STREET STE 101	FRESNO	93720-2985	(559) 226-3937
MULVEY RAYMOND OD	OD	7780 N FRESNO ST STE 103	FRESNO	93720-2413	(559) 435-2060
NISHIJIMA DEAN K OD	OD	5770 N 1ST ST	FRESNO	93710-6204	(559) 432-1700
PAZIRANDEH ARYAN OD	OD	6767 N FRESNO ST	FRESNO	93710-3739	(559) 432-1000
PEARSON THOMAS R OD	OD	1360 E HERNDON AVE STE 401	FRESNO	93720-3326	(559) 449-5010
RECALDE MARGARETTE R OD	OD	7075 N SHARON AVE	FRESNO	93720-3329	(559) 486-2000
SCHMIDT AMANDA R OD	OD	1284 W SHAW AVE STE 105	FRESNO	93711-3711	(559) 225-2020
SCHMIDT RUSSELL S OD	OD	4710 N CEDAR #106	FRESNO	93726-1086	(559) 229-4761
SCOTT PATRICK J OD	OD	1360 E HERNDON AVE AUIITE #201	FRESNO	93720	(559) 449-5050
SHMORGUN JULIA E OD	OD	5125 KINGS CANYON RD	FRESNO	93711-3937	(559) 452-8477
SINQUIN ETIENNE OD	OD	3010 N FRESNO STREET	FRESNO	93703-1124	(559) 221-1414
SIVAS DAVID R OD	OD	5781 E KINGS CANYON RD	FRESNO	93727-4743	(559) 251-8272
SMITH JERVY W OD	OD	6729 N PALM AVE STE 104	FRESNO	93704-1076	(559) 650-3937
STEWART JAMES A OD	OD	6053 N PALM AVE	FRESNO	93704-1623	(559) 437-0777
TOVEY ROBERT J OD	OD	3081 W BULLARD AVE	FRESNO	93711-1609	(559) 277-0015
URIEN DAVID R OD	OD	5430 N PALM AVE STE 101	FRESNO	93704-1900	(559) 432-0606
UYEMURA ALAN OD	OD	6760 N WEST AVE STE 103	FRESNO	93711-1396	(559) 226-6701
WIENS AARON M OD	OD	1360 E. HERNDON STE 401	FRESNO	93720-3326	(559) 449-5010
WIENS AARON M OD	OD	3830 N. 1ST STREET	FRESNO	93726-4301	(559) 449-5010
WILKINS TIMOTHY A OD	OD	5551 E KINGS CANYON RD	FRESNO	93727-4531	(559) 252-2325

PROVIDER NAME	PROV TYPE	STREET ADDRESS	CITY	ZIPCODE	TEL NO
WILKINS TIMOTHY A OD	OD	2331 KERN ST	FRESNO	93721-2700	(559) 264-7799
WONG ELMER OD	OD	6700 N 1ST ST STE 103	FRESNO	93710-3947	(559) 438-6440
YAO ALBERT H OD	OD	20 W SHAW AVE # B	FRESNO	93704-2816	(559) 225-0848
YORIZANE SHAW OD	OD	7411 N CEDAR AVE STE 102	FRESNO	93720-3835	(559) 447-5522
ZHOU HELEN OD	OD	1360 E HERNDON STE 401	FRESNO	93720-3326	(559) 449-5010
ZHOU HELEN OD	OD	3830 N 1ST STREET	FRESNO	93726-4301	(559) 449-5010
ZULIM LORRAINE A OD	OD	1360 E HERNDON AVE #301	FRESNO	93720-3326	(559) 486-5000
ZULIM LORRAINE A OD	OD	1122 S STREET	FRESNO	93721-1430	(559) 486-5000
CA EYE INSTITUTE MED GRP	OPT	1360 E HERNDON AVE STE 101	FRESNO	93720-3326	(559) 449-5025
COSTCO OPTICAL	OPT	4500 W SHAW	FRESNO	93722-6200	(559) 271-6502
COSTCO OPTICAL	OPT	7100 N ABBY	FRESNO	93720-2920	(559) 437-3641
EXCELLENCE IN EYEWEAR	OPT	4710 N CEDAR #101	FRESNO	93726-1065	(559) 229-4761
EYEGLOSS WORLD	OPT	20 W SHAW AVE	FRESNO	93704-2816	(559) 222-0220
LENSCRAFTERS	OPT	4983 N BLACKSTONE AVE	FRESNO	93726-0109	(559) 229-7955
SAM'S CLUB VISION CENTER	OPT	7663 N BLACKSTONE AVE	FRESNO	93720-4306	(559) 446-0241
SEARS OPTICAL	OPT	3636 N BLACKSTONE AVE	FRESNO	93726-5304	(559) 244-3368
WAL-MART VISION CENTER	OPT	7065 N INGRAM AVE	FRESNO	93650-1083	(559) 431-3156
WAL-MART VISION CENTER	OPT	3680 W SHAW AVE	FRESNO	93711-3231	(559) 277-1876
WAL-MART VISION CENTER	OPT	5125 E KINGS CANYON RD	FRESNO	93727-3937	(559) 255-5805
DOI DARYL OD	OD	449 S MADERA AVE	KERMAN	93630-1537	(559) 846-5252
URIEN DAVID R OD	OD	275 S MADERA AVE STE 300	KERMAN	93630-1401	(559) 846-8210
BONANDER DAROL OD	OD	1401 WASHINGTON ST	KINGSBURG	93631-1946	(559) 897-1071
YAMASHITA PAUL OD	OD	1611 LEWIS ST	KINGSBURG	93631-1923	(559) 897-2464
NAKANISHI ALAN S MD	MD	521 S HAM LANE SUITE A	LODI	95242-3528	(209) 334-5886
CARTER DAVID A OD	OD	1592 11TH ST STE C2	REEDLEY	93654-2940	(559) 638-6099
DIXON PHILLIP L OD	OD	1056 G ST	REEDLEY	93654-2936	(559) 638-8288
EIDAL BRYAN D OD	OD	1630 11TH STREET	REEDLEY	93654-2902	(559) 638-2246
BONANDER DAROL OD	OD	3458 W. MT WHITNEY	RIVERDALE	93656	(559) 867-3054
KAYE DAVID B MD	MD	2514 JENSEN AVE STE 103	SANGER	93657-2451	(559) 875-2000
NGUYEN LOAN K MD	MD	2514 JENSEN AVE STE 103	SANGER	93657-2451	(559) 875-2000
BARRON JOHN G OD	OD	2514 JENSEN AVE STE 103	SANGER	93657-2451	(559) 875-2000
CHASTAIN DONNA OD	OD	1000 N ST	SANGER	93657-3120	(559) 875-1112
KEBO LARRY OD	OD	1400 JENSEN AVE	SANGER	93657-2413	(559) 875-4515
PAZIRANDEH ARYAN OD	OD	2514 JENSEN AVE STE 103	SANGER	93657-2451	(559) 875-2000
SORSKY MARC E OD	OD	1329 8TH ST #2	SANGER	93657-3171	(559) 875-5524
ILLUSION OPTICAL	OPT	632 "O" STREET	SANGER	93657-2417	(559) 875-4237
WAL-MART VISION CENTER	OPT	2761 JENSEN AVENUE	SANGER	93657-9797	(559) 875-9825
HINTON SAMUEL P MD	MD	2719 CINEMA WAY	SELMA	93662-2662	(559) 486-2000
MOORS RICHARD L MD	MD	2719 CINEMA WAY	SELMA	93662-2662	(559) 486-2000
NERENBERG ALAN V MD	MD	2719 CINEMA WAY	SELMA	93662-2662	(559) 896-9000
WALKER BAIRN M MD	MD	2719 CINEMA WAY	SELMA	93662-2662	(559) 486-2000
WOOD MARK G MD	MD	2719 CINEMA WAY	SELMA	93662-2662	(599) 486-2000
BAUDONNET ANTHONY OD	OD	2719 CINEMA WAY	SELMA	93662-2662	(559) 256-8504
BORBA KARISA M OD	OD	2719 CINEMA WAY	SELMA	93662-2662	(559) 896-9000
KING DAVID R OD	OD	2020 HIGH ST STE I	SELMA	93662-3518	(559) 896-3937
LOPEZ DANIEL OD	OD	2719 CINEMA WAY	SELMA	93662-2662	(559) 486-2000
RECALDE MARGARETTE R OD	OD	2719 CINEMA WAY	SELMA	93662-2662	(559) 486-2000

PROVIDER NAME	PROV TYPE	STREET ADDRESS	CITY	ZIPCODE	TEL NO
---------------	-----------	----------------	------	---------	--------

KINGS

MAYER MICHAEL S OD	OD	341 E KINGS ST	AVENAL	93204-1630	(559) 386-0200
KING DAVID R OD	OD	1046 WHITLEY AVE	CORCORAN	93212-2324	(559) 992-3400
CARDOZA SUZANNE M OD	OD	665 N DOUTY ST	HANFORD	93230-3912	(559) 582-4316
ESQUEDA NICOLE D OD	OD	115 N IRWIN ST	HANFORD	93230-4537	(559) 584-4227
JENSEN ALESHA J OD	OD	202 W MYRTLE STREET	HANFORD	93230-3805	(559) 582-9288
KIRBY DARRELL OD	OD	202 W MYRTLE ST	HANFORD	93230-3805	(559) 582-9288
MAYER MICHAEL S OD	OD	431 N IRWIN ST	HANFORD	93230-4425	(559) 582-9244
SERRINS STEVE OD	OD	570 N 11TH AVE	HANFORD	93230-4406	(559) 582-0392
WHITE JEFFREY W OD	OD	715 N IRWIN ST	HANFORD	93230-3813	(559) 584-1630
YOST PAUL F OD	OD	431 N IRWIN ST	HANFORD	93230-4425	(559) 582-9244
SEARS OPTICAL	OPT	1679 W LACEY BLVD	HANFORD	93230-5928	(559) 582-9791
WAL-MART VISION CENTER	OPT	250 S 12TH AVE	HANFORD	93230-6176	(559) 583-7327
FORTE JAMES J OD	OD	321 C ST	LEMOORE	93245-2931	(559) 924-2666
GARCIA JEFFREY OD	OD	450 W D ST	LEMOORE	93245-2612	(559) 924-4417

MADERA

NISHIO WAYNE A OD	OD	145 N 2ND ST STE 101	CHOWCHILLA	93610-2910	(559) 665-3797
FOGG STEVEN G MD	MD	2401 W CLEVELAND AVE	MADERA	93637-3608	(559) 449-5015
KAYE DAVID B MD	MD	1011 W YOSEMITE AVE	MADERA	93637-4556	(559) 673-6000
LIN NING MD	MD	2325 W CLEVELAND AVE #103	MADERA	93637-8753	(559) 674-4700
MAXWELL W A MD	MD	2401 W CLEVELAND AVE	MADERA	93637-3608	(559) 449-5010
NGUYEN LOAN K MD	MD	1011 W YOSEMITE AVE	MADERA	93637-4556	(559) 673-6000
PISKOVA RAYNA MD	MD	1816 HOWARD RD STE 4	MADERA	93637-5157	(559) 675-1715
REMINGTON RODNEY C MD	MD	2401 W CLEVELAND AVE	MADERA	93637-3608	(559) 449-5015
BARRON JOHN G OD	OD	1011 W YOSEMITE	MADERA	93637-4556	(559) 673-6000
BOWLIN HEATHER W OD	OD	2401 CLEVELAND AVENUE	MADERA	93638-3608	(559) 449-5010
GARCIA ROD A OD	OD	620 W YOSEMITE AVE	MADERA	93637-4523	(559) 674-6268
HOWELL STEVEN L OD	OD	620 W YOSEMITE AVE	MADERA	93637-4523	(559) 674-7059
OW-YOUNG SANDRA OD	OD	1930 HOWARD RD STE 122	MADERA	93637-5155	(559) 661-1927
PAZIRANDEH ARYAN OD	OD	1011 W YOSEMITE AVE	MADERA	93637-4556	(559) 673-6000
SHMORGUN JULIE OD	OD	1977 W CLEVELAND AVE	MADERA	93637-8705	(559) 673-8478
WIENS AARON M OD	OD	2401 WEST CLEVELAND AVENUE	MADERA	93638-3608	(559) 449-5010
ZHOU HELEN OD	OD	2401 W CLEVELAND AVE	MADERA	93638-3608	(559) 449-5010
WAL-MART VISION CENTER	OPT	1977 W CLEVELAND AVE	MADERA	93637-8705	(559) 661-4862
FOGG STEVEN G MD	MD	40232 JUNCTION DR	OAKHURST	93644-8719	(559) 449-5010
MAXWELL WILLIAM A MD	MD	40232 JUNCTION DR	OAKHURST	93644-8719	(559) 449-5010
REMINGTON RODNEY C MD	MD	40232 JUNCTION DR	OAKHURST	93644-8719	(559) 449-5010
DOSANJH RAJINDERPAL S OD	OD	40120 HWY 49 STE. A	OAKHURST	93644-8958	(559) 683-5100
PARKER STEPHEN OD	OD	40120 HIGHWAY 49 # A	OAKHURST	93644-8826	(559) 683-5100
PEARSON THOMAS R OD	OD	40232 JUNCTION DR	OAKHURST	93644-8719	(559) 449-5010
ZHOU HELEN OD	OD	40232 JUNCTION DRIVE	OAKHURST	93644-8719	(559) 449-5010

TULARE

FARRELL ALLYSON OD	OD	119 S L ST	DINUBA	93618-2324	(559) 591-4656
FARRELL ROBERT B OD	OD	119 S L ST	DINUBA	93618-2324	(559) 591-4656

PROVIDER NAME	PROV TYPE	STREET ADDRESS	CITY	ZIPCODE	TEL NO
GROSSMAN NATHAN OD	OD	700 W EL MONTE WAY	DINUBA	93618-3493	(559) 591-5208
SIVAS HAROLD OD	OD	700 WEST EL MONTE WAY	DINUBA	93618	(559) 591-5208
WAYDA ROBERT A OD	OD	204 N K ST	DINUBA	93618-1926	(559) 591-1025
WAL-MART VISION CENTER	OPT	700 W EL MONTE WAY	DINUBA	93618-3493	(559) 591-1390
MILLER TERENCE A OD	OD	400 E PINE ST	EXETER	93221-1844	(559) 592-3121
NARAHARA ROBERT K OD	OD	400 E PINE ST	EXETER	93221-1844	(559) 592-3121
WALLACE DENNIS J OD	OD	662 E VISALIA RD	FARMERSVILLE	93223-1641	(559) 747-3461
PETERSON GARRICK K OD	OD	141 S MIRAGE AVE	LINDSAY	93247-2541	(559) 562-4963
HASNAIN SYED S MD	MD	560 W PUTNAM AVE STE 6	PORTERVILLE	93257-3269	(559) 781-7482
GILLETT ROBERT D OD	OD	418 W PUTNAM AVE	PORTERVILLE	93257-3321	(559) 784-4063
ITO COLLEEN F OD	OD	100 NORTH "D" ST	PORTERVILLE	93257-3621	(559) 782-0766
POLSTER PHILLIP OD	OD	1250 W HENDERSON AVE	PORTERVILLE	93257-1455	(559) 783-8277
STEIDLEY TREVOR L OD	OD	100 N D ST	PORTERVILLE	93257-3621	(559) 782-0766
STOVER DON OD	OD	526 W PUTNAM AVE	PORTERVILLE	93257-3274	(559) 781-2020
SUORSA TIMOTHY P OD	OD	524 W PUTNAM AVE	PORTERVILLE	93257-3274	(559) 784-5127
WAL-MART VISION CENTER	OPT	1250 W HENDERSON AVE	PORTERVILLE	93257-1455	(559) 783-8278
SUNALP MURAD A MD	MD	880 E MERRITT AVE STE 109	TULARE	93274-2200	(559) 688-2020
ADKINS WILLIAM OD	OD	1340 E PROSPERITY AVE	TULARE	93274-8052	(559) 685-8779
HOANG HUE K OD	OD	1110 E PROSPERITY AVE	TULARE	93274-8029	(559) 687-8721
KAILA GURJEET R OD	OD	2195 E PROSPERITY AVE	TULARE	93274-7754	(559) 684-7628
SHAHRIARY SHAHRZAD OD	OD	1259 E PROSPERITY AVE	TULARE	93274-8060	(559) 688-5020
SHAHRIARY SHAHRZAD OD	OD	2195 E PROSPERITY AVE	TULARE	93274-7754	(559) 684-7628
TARGET OPTICAL	OPT	2195 E. PROSPERITY AVENUE	TULARE	93274-7754	(559) 684-7628
THE VISION CENTER IN WAL*MART	OPT	1110 E PROSPERITY AVE	TULARE	93274-8029	(559) 687-8364
CHARTERS DOUGLAS O OD	OD	3749 S MOONEY BLVD	VISALIA	93277-8000	(559) 733-9966
CHILES JESSICA N OD	OD	2333 W WHITENDALE AVE	VISALIA	93277-8701	(559) 733-7700
CYPRESS MICHAEL S OD	OD	3530 SOUTH MOONEY BLVD	VISALIA	93277-7774	(559) 627-3142
DENISON ALLEN J OD	OD	5021 W NOBLE AVE # A	VISALIA	93277-8310	(559) 627-9393
DILL GERALD L OD	OD	3501 S MOONEY BLVD	VISALIA	93277-7775	(559) 636-0102
EYEXAM2000	OD	2223 S MOONEY BLVD # 820	VISALIA	93277-6243	(559) 739-0153
FUKUSHIMA CLIFFORD A OD	OD	5501 W HILLSDALE AVE STE D	VISALIA	93291-5159	(559) 625-5464
HIEB KEN OD	OD	3749 S MOONEY BLVD	VISALIA	93277-8000	(559) 733-9966
HOLLAND BRIAN C OD	OD	2179 S MOONEY BLVD	VISALIA	93277-6242	(559) 732-2291
JYSTAD CRAIG OD	OD	3749 S MOONEY BLVD	VISALIA	93277-8000	(559) 733-9966
LEE YUWEN OD	OD	1405 WEST CAMERON AVENUE	VISALIA	93277-9527	(559) 625-2882
MANN SURBJEET OD	OD	1819 E. NOBLE AVE	VISALIA	93292-1519	(559) 636-2477
MENDELSON SAUL M OD	OD	2333 W WHITENDALE AVE	VISALIA	93277-8701	(559) 733-7700
PETERSON GARRICK K OD	OD	5117 W WALNUT AVE	VISALIA	93277-3472	(559) 636-2008
PRICE MARK O OD	OD	812 W OAK AVE	VISALIA	93291-6034	(559) 732-0778
RANSBERGER JUDITH L OD	OD	5021 W NOBLE AVE STE A	VISALIA	93277-8310	(559) 627-9393
SERRINS STEVE OD	OD	1618 E. CALDWELL AVENUE	VISALIA	93292-9228	(559) 737-9690
SIVAS HAROLD C OD	OD	1819 EAST NOBLE AVENUE	VISALIA	93292-1519	(559) 636-2477
YASUDA JERRY M OD	OD	3358 S FAIRWAY ST	VISALIA	93277-8109	(559) 732-6687
COSTCO OPTICAL	OPT	1405 W CAMERON AVE	VISALIA	93277-9527	(559) 625-3915
JON'S OPTIQUE	OPT	114 W MAIN ST	VISALIA	93291-6270	(559) 734-2020
LENSCRAFTERS	OPT	2223 S MOONEY BLVD # 820	VISALIA	93277-6243	(559) 739-8550
SEARS OPTICAL	OPT	3501 S MOONEY BLVD	VISALIA	93277-7775	(559) 636-6002
WAL-MART VISION CENTER	OPT	1819 E NOBLE AVE	VISALIA	93292-1519	(559) 636-2476

PROVIDER NAME	PROV TYPE	STREET ADDRESS	CITY	ZIPCODE	TEL NO
STEIDLEY TREVOR L OD	OD	160 S VALENCIA BLVD STE B	WOODLAKE	93286-1712	(559) 564-2020